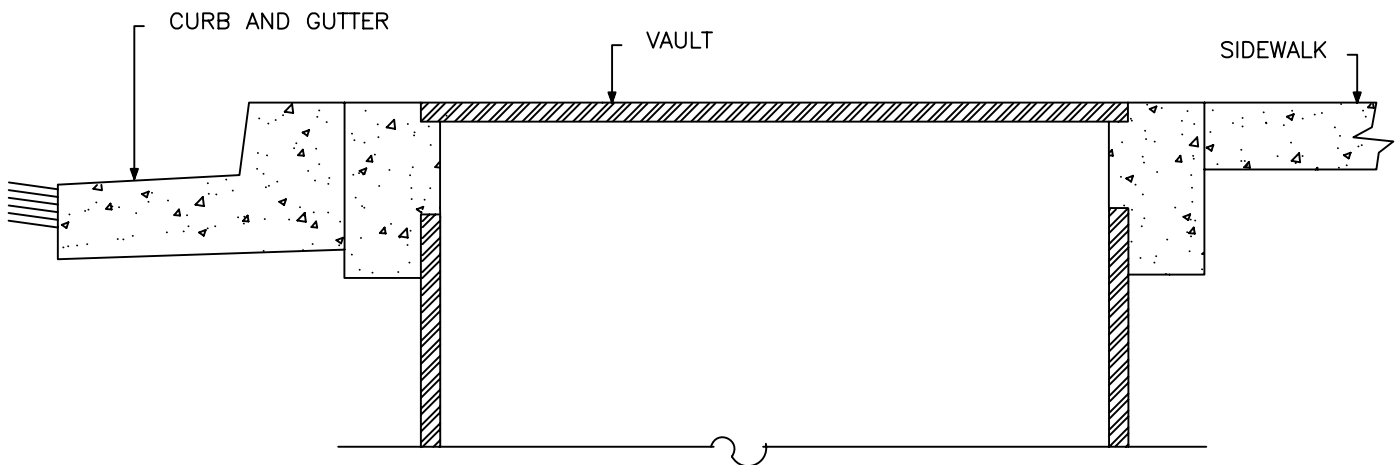
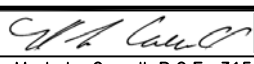


METER BOX DETAIL



VAULT DETAIL

1. METER BOXES AND UTILITY VAULTS IN SIDEWALKS SHALL BE PERPENDICULAR TO AND ADJACENT WITH THE BACK OF CURB, AND SHALL BE FLUSH WITH TOP OF SIDEWALK.
2. METER BOXES AND UTILITY VAULTS WITHIN THE SIDEWALK AREA SHALL HAVE A BOLT DOWN COVER WITH A SLIP-RESISTANT FINISH, COVER SHALL BE BOLTED DOWN WITH 5 SIDED BOLTS, TOP OF BOLTS SHALL BE FLUSH WITH THE TOP OF COVER.

REVISIONS	CITY OF IRVINE	STANDARD PLAN No.
	<b>METER &amp; VAULT COVER DETAIL</b>	<b>220</b>
	 Approved by: Mark L. Carroll R.C.E. 31515 City Engineer	Sheet 1 of 1
	Date: 03-19-2009	